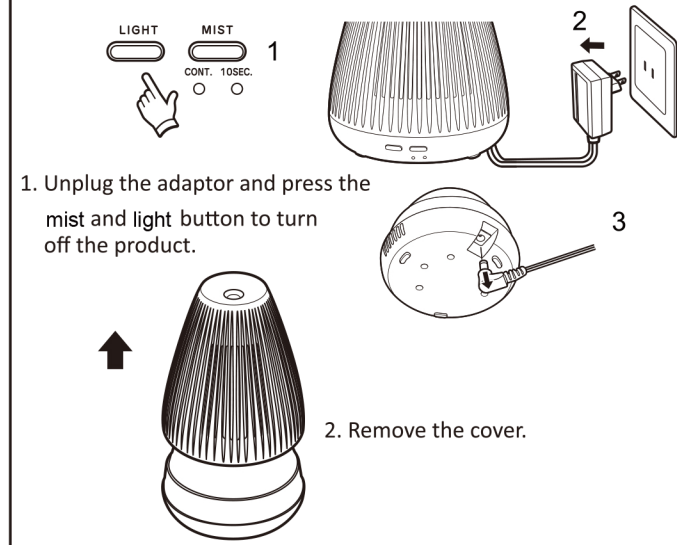


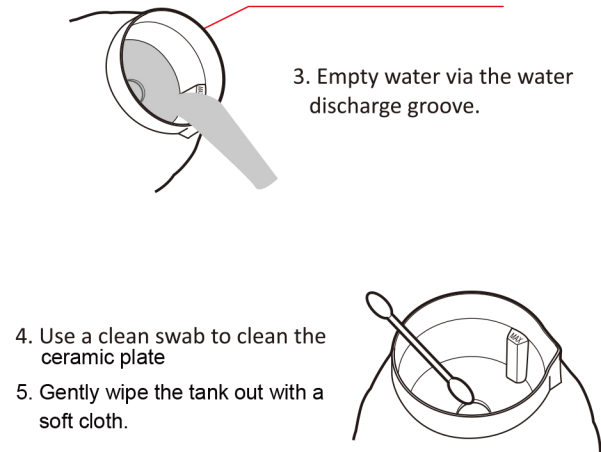
MAINTENANCE



1. Unplug the adaptor and press the mist and light button to turn off the product.

2. Remove the cover.

WARNING:
DO NOT EMPTY WATER FROM THE VENT HOLE.



3. Empty water via the water discharge groove.

4. Use a clean swab to clean the ceramic plate

5. Gently wipe the tank out with a soft cloth.

TROUBLESHOOTING

Symptom	Possible Cause	Solution
No Mist	Power supply is not connected	Plug the power and press the MIST and LIGHT button
	Insufficient water	Refill the water tank
	There's too much water that it even exceeds the Max. water level line	Dump the redundant water
	The atomization mouth is blocked	Clean the mouth and keep it ventilated

WARNING

In case of any abnormal observations such as smoke, peculiar smells or noise, stop using the unit immediately to avoid the risk of an accident such as fire or electric shock. You should unplug the adaptor immediately and contact your local dealer. Never wrap the adaptor or Aroma Diffuser with cloth or paper, as blocking the ventilation could increase the risk of a fire. Never attempt to disassemble or repair the product. In case of internal inspection or repair becoming necessary, please contact your local dealer. Please keep the product out of the reach of children to avoid risk of any Injury. Your Aroma Diffuser should be cleaned regularly and kept clean and dry when not in use.

IMPORTANT!

Corrosive oils such as Citronella may cause damage to the ceramic disc if left in the reservoir when not operating the unit. This type of damage will not be covered under the warranty. This Aroma Diffuser must be cleaned after each use.

ONE YEAR WARRANTY

This SCENTWORKS limited warranty does not cover any damage, deterioration or malfunction resulting from any alteration, modification, improper use or maintenance, misuse, accident, exposure to excess moisture, fire, lightning, power surges, or other acts of nature.

This limited warranty lasts for one (1) year from the date of original purchase of this product. In order to pursue any remedy under this limited warranty, please visit www.scentworks.co.za/warranty or email warranty@scentworks.co.za with your name, contact details and a copy of your receipt. Only registered warranties will be accepted in case of returns, malfunctions and other claims for your device.

Scentworks Pty Ltd at its sole option, will provide one of the following three:

- Elect to repair or facilitate the repair of any defective parts within a reasonable period of time, free of any charge for the necessary parts and labour to complete the repair and restore this product to its proper operating condition.
- Replace this product with a direct replacement or with a similar product deemed by ourselves to perform substantially the same function as the original product.
- Issue a refund of the original purchase price less depreciation to be determined based on the age of the product at the time remedy is sought under this limited warranty.

The maximum liability under this warranty is the retail purchase price paid for this item.

AURA



ETERNITY

LUXURIOUS SCENT DIFFUSER

The Eternity ultrasonic oil diffuser uses ultrasonic technology to turn water and essential oils into fine micro-particles, diffusing aroma as mist without heat. Since this process of diffusing essential oils is also smokeless and heatless the purity and health benefits of these oils remain intact.

Simply add a few drops of your favourite fragrance oil into the water filled reservoir, replace the cover and push the buttons to control mist intensity and light. Auto shut off feature gives you peace of mind.

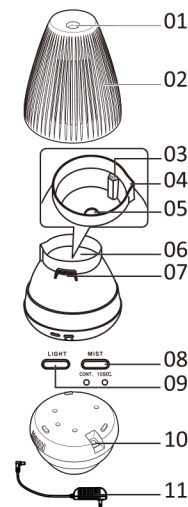
SCENTWORKS (PTY) LTD

74 Kyalami Boulevard, Kyalami Business Park, Midrand, Gauteng, South Africa
info@scentworks.co.za
www.scentworks.co.za

SPECIFICATIONS

Item No.: AURA Eternity
 Product Size: $\Phi 115\text{mm} \times 146.2\text{mm}$
 Voltage: DC 24V
 Power: 12W
 Water Capacity: 80ml
 Run time: Over 2 hours continuous, up to 5 hours intermittent

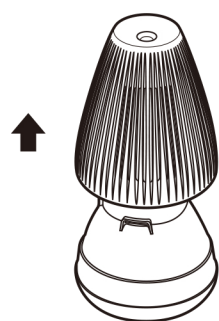
- Mist Outlet
- Cover
- Max. Water Level Line
- Water Discharge Groove
- Ceramic Plate
- Water Tank
- Vent Hole
- Mist Button
- Light Button
- DC Jack
- Adaptor



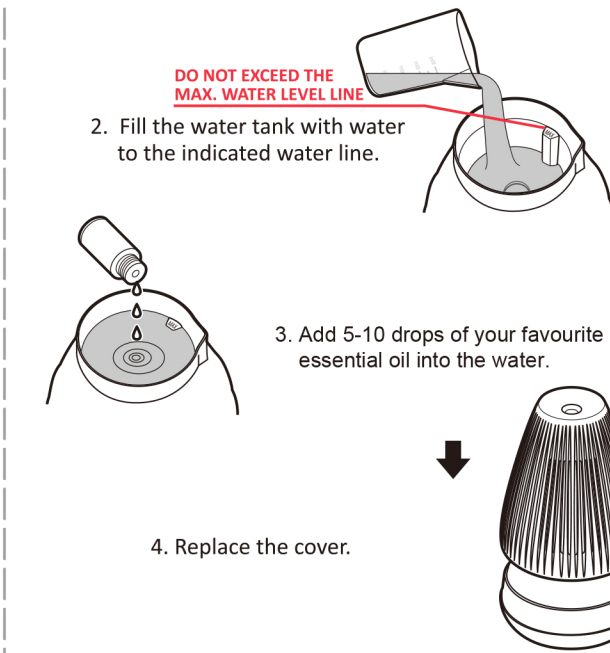
OPERATING PROCEDURE

IMPORTANT NOTES BEFORE USE:

Place the Aroma Diffuser on an even surface. Always fill with tap water at room temperature. Water-soluble essential oils are recommended.



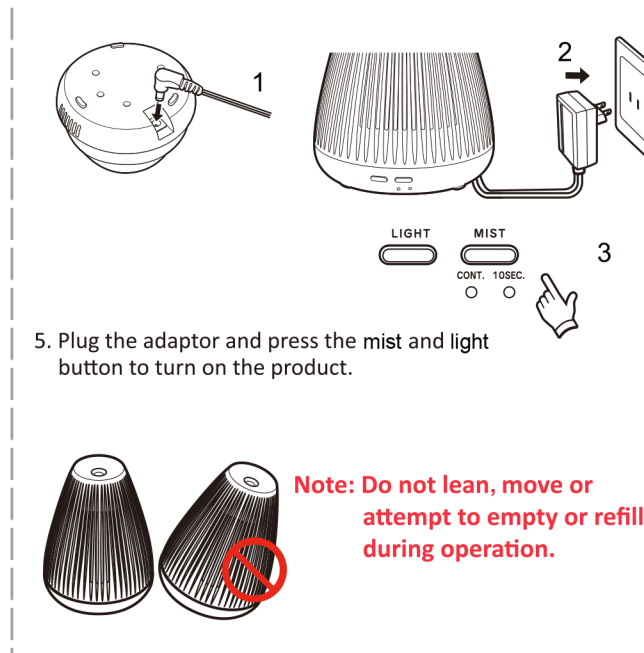
1. Remove the cover.



2. Fill the water tank with water to the indicated water line.

3. Add 5-10 drops of your favourite essential oil into the water.

4. Replace the cover.



5. Plug the adaptor and press the mist and light button to turn on the product.

Note: Do not lean, move or attempt to empty or refill during operation.



Button:

1. Mist Control:

1st Press: Green indicator light and continuous mist on;
 2nd Press: White indicator light and intermittent mist on;
 3rd Press: Mist off.



2. Light Control:

1st Press: Light on;
 2nd Press: Light off.